

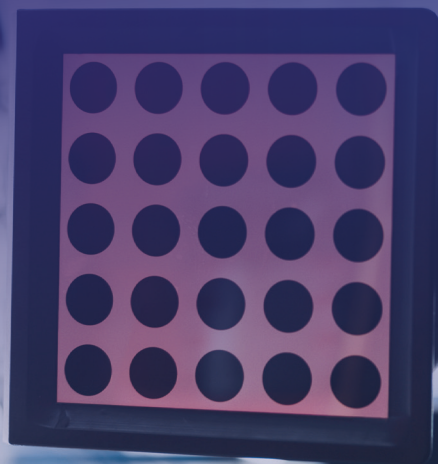
ALIGNMENT

Alignment Tool Assortments

Camber/Caster Tools

Heavy Duty Alignment

Automotive Alignment Equipment





Alignment Tool Assortments

PASSENGER CAR ASSORTMENT BOARD SET

- Board set includes the most popular shims, cam kits and adjustable strut plates • A "must have" for any shop performing 4 wheel alignments on passenger cars
- Shipped with high-strength polymer display board

• CONTAINS ONE OF EACH OF THE FOLLOWING:
26012, 26014, 82380, 82385, 82390, 86250, 86325, 86350, 86375, 87385, 87420, 87500, 87520

ASCOT NO.	MFG. NO.	DESCRIPTION
251-88260	88260	Passenger Car Assortment Board Set



251-88260

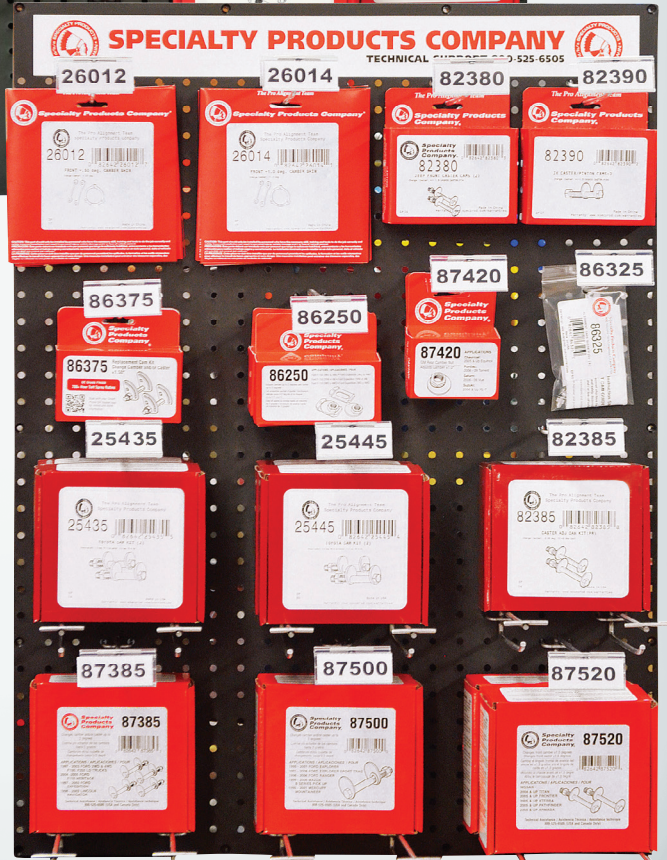
LIGHT TRUCK/SUV SLEEVE ASSORTMENT BOARD SET

- This great new board set includes the most popular parts for aligning today's trucks and SUVs. Don't be caught without the part that you need • Shipped with the polymer display board

• CONTAINS ONE OF EACH OF THE FOLLOWING:
66050, 66025, 66037, 72055, 81250, 81260, 81270, 81280, 81290, 84120, 87365

ASCOT NO.	MFG. NO.	DESCRIPTION
251-88270	88270	Light Truck/SUV Sleeve Assortment Board

251-88270



Camber/Caster Terms & Definitions

ALIGNMENT TERMS for CAMBER

DEFINITION Inward or outward tilt of the top of the wheel

PURPOSE Adjustment centers the vehicle's load on tire, eliminating pull. Proper adjustments reduce camber tire wear and pulling

METHODS OF ADJUSTMENT (1) Shims; (2) Cams; (3) Slotted Frame; (4) Strut Rod; (5) Wedges; (6) Ball Joint Rotation; (7) Offset Bearing Plates; (8) Cam Bolts; (9) Eccentrics; (10) Offset Ball Joints

0 CAMBER When wheel and tire assembly are in exact vertical position

POS. CAMBER When the top of the wheel and tire assembly is tilted out, or away from the engine

NEG. CAMBER The top of the wheel and tire assembly is tilted in toward the engine

ALIGNMENT TERMS for CASTER

DEFINITION The forward or backward tilt of the upper ball joint, or top of the strut, relative to the lower ball joint

PURPOSE Caster affects steering stability and steering wheel returnability

METHODS OF ADJUSTMENT (1) Shims; (2) Cams; (3) Slotted Frame; (4) Strut Rod; (5) Strut Rotation; (6) Cradle Movement; (7) Offset Ball Joint; (8) Sliding Ball Joint

0 CASTER The upper ball joint or top strut bearing and lower ball joint are in the same plane as viewed from the side of the vehicle

POS. CASTER The upper ball joint or top strut bearing is toward the rear of the vehicle in relation to the lower ball joint as viewed from the side of the vehicle

NEG. CASTER The upper ball joint or top strut bearing is toward the front of the vehicle in relation to the lower ball joint as viewed from the side of the vehicle

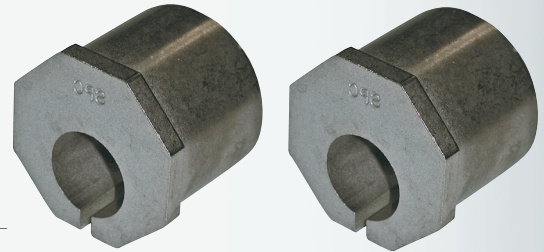


Camber/Caster Tools

23220 & 23230 SLEEVE SETS

• Ford changed the axle design in 2005 on their Heavy Duty trucks. These sleeves correct camber and caster on the new 4x4 F250 and F350 Super Duty trucks

ASCOT NO.	MFG. NO.	DESCRIPTION	APPLICATIONS
231-23220	23220	Complete Set	FORD 4WD: 2005 & Up F250, F350 Super Duty; FORD RWD: 2005 & Up F250, F350 Solid Axle/Coil Spring
231-23230	23230	Complete Set	FORD RWD/4WD: 2005 & Up F450, F550 Coil Springs; CHEVY/GMC 4WD: 2005 & Up Kodiak K4500, Topkick K5500



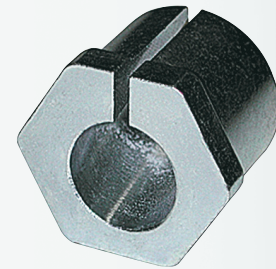
231-23220

231-23230

FORD 2 & 4WD CAMBER/CASTER TRUCK SLEEVES

• Sleeves are widely used to adjust caster and/or camber on many Ford 2WD/4WD trucks • To install, simply loosen and remove upper ball joint pinch bolt. Remove top snap ring if one is present • Sleeves allow for larger caster and camber changes which may be required on lowered and raised trucks • SET INCLUDES: Nine of the XRTM Camber/Caster truck sleeves

ASCOT NO.	MFG. NO.	DESCRIPTION	APPLICATIONS
231-23180	23180	Complete Set	FORD 2WD:1987 & Up F350, 1987-96 F150, F250 (L/D), 1989-90 Bronco II, 1992 & Up E150, E250, E350, 1991-94 Explorer, 1989 -97 Ranger, 1999 & Up F250, F350 Super Duty; MAZDA 2WD:1991-97 Navajo, Pickup; Ford 4WD:1991-94 Explorer, 1990 - 97 Ranger; MAZDA 4WD:1991-97 Navajo, Pickup



231-23180

BALL JOINT PRESS SLEEVES

• These specially designed sleeves make installation of the #23510-40 ball joints easy and profitable for the installer • Sleeves are designed to match the angle of the yoke on the axle housing to insure proper ball joint

ASCOT NO.	MFG. NO.	DESCRIPTION
231-23580	23580	Bushing Sleeves For Ball Joints 23510, 23520, 23530, 23540



231-23580

TIE ROD ADJ WRENCH SET (4)

• Adjust inner tie rods with this easy to use 4-piece wrench set • The wrenches feature spring loaded toothed jaws and sturdy grips to make toe adjustments quick and easy • This set of wrenches fits tie rods from 10.5 to 19mm • Individual tools are also available: 40850 fits 10.5-12mm rods, 40860 fits 12-14mm rods, 40870 fits 14-16mm rods, 40880 fits 16-19 mm rods

ASCOT NO.	MFG. NO.	DESCRIPTION
231-40840	40840	Tie Rod Adj Wrench Set (4)



231-40840

14 X 16MM SLOT PUNCH

• Use an SPC slot punch to elongate a hole and get the change you need • Whether the OE left you an upset that won't break out, didn't give you a large enough slot, or didn't give you a slot at all, use this high-quality tool to quickly and easily punch one • Made in the USA with tight tolerances and high quality bearings these punches are built to last

ASCOT NO.	MFG. NO.	DESCRIPTION
231-74920	74920	14 x 16mm Slot Punch



231-74920



F150/250 (L/D) 2/4WD CAMBER/CASTER KIT

ASCOT NO.	MFG. NO.	DESCRIPTION	APPLICATIONS
231-87385	87385	F/150/250, 2/4WD Camber Caster Kit	FORD: 1997-03 F150, F250 (L/D), 1997-02 2WD & 4WD Expedition; LINCOLN: 1997-02 2WD & 4WD Navigator



GM 2WD & 4WD CAMBER/CASTER KIT

ASCOT NO.	MFG. NO.	DESCRIPTION	APPLICATIONS
231-87400	87400	GM 2/4WD Camber Caster Kit	GM: 1988-99 1500, 2500, 3500 C & K series 2WD/4WD trucks, 1990 & up Safari AWD Van; CHEVROLET: 1990 & up Astro AWD Van



GM 2WD & 4WD CAMBER/CASTER KIT

ASCOT NO.	MFG. NO.	DESCRIPTION	APPLICATIONS
231-87500	87500	Ford Explorer Camber/Caster Set	FORD: 1995-01 2WD & 4WD Explorer, 1998 & up 2WD & 4WD Ranger; MERCURY: 1995-01 2WD & 4WD Mountaineer; MAZDA: 1998 2WD & 4WD B-Series Pickup



EXPLORER CAMBER/CASTER KIT

- Set of 4 cams for quick installation without having to remove the upper control arm bolt

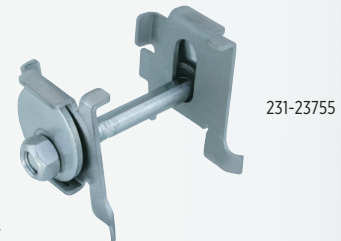
ASCOT NO.	MFG. NO.	DESC.	APPLICATIONS
231-87310	87310	Explorer Camber/Caster Kit	FORD: 1995-01 2WD & 4WD Explorer, 1998-02 2WD & 4WD Ranger; MERCURY: 1995-01 & up 2WD & 4WD Mountaineer; MAZDA: 1998 2WD & 4WD B-Series Pickup



DODGE TRUCK CAMBER/CASTER KITS

- KIT INCLUDES: 4 cam and bolt sets to cover both sides of the vehicle

ASCOT NO.	MFG. NO.	DESCRIPTION	APPLICATIONS
231-23755	23755	Dodge Camber/Caster Kit, 4 Wheel Drive	DODGE: 2002 & Up 1500 Series - 4 Wheel Drive
231-23765	23765	Dodge Camber/Caster Kit, 2 Wheel Drive	DODGE: 2002 & Up 1500 Series - 2 Wheel Drive



EZ CAM XR (14MM - 2)

- Make a two-bolt strut adjustable up to $\pm 1.75^\circ$ camber with the EZCam™ from Specialty Products. Simply remove the upper bolt, install the EZCam, loosen the lower bolt, and dial in the required change.

ASCOT NO.	MFG. NO.	DESCRIPTION
231-81260	81260	EZ CAM XR (14mm - 2)





Camber/Casters Tools (cont.)

JEEP AND DODGE OFFSET BALL JOINT

- Offset ball joint replaces the O.E. upper ball joint to provide up to 2° camber/caster change on several previously non-adjustable Jeep and Dodge vehicles • Comes with an installation template for accurate change

ASCOT NO.	MFG. NO.	DESCRIPTION	APPLICATIONS
237-23510	23510	1/2" Positive Or Negative Change	
237-23520	23520	1" Positive Or Negative Change	JEEP: 1984 & up 2WD/4WD Cherokee, Comanche, 1987 & up Wrangler; 1990 & up Renegade, 1984 & up 2WD/4WD downsize Wagoneer; 1993 & up Grand Cherokee, DODGE: 1994 -2001 BR1500 4WD & BR2500 (L/D) Pickups
237-23530	23530	1-1/2" Positive Or Negative Change	
237-23540	23540	2" Positive Or Negative Change	



237-23520

FORD F150 KIT

- Easily adjust camber and caster on F150s from '04 and up (including late model) and '07 & up Expeditions

ASCOT NO.	MFG. NO.	DESCRIPTION	APPLICATIONS
231-86250	86250	Ford F150 Kit	FORD: 2004 & Up F150, 2007 & Up Expedition; LINCOLN: 2006 & Up Mark LT, 2007 & Up Navigator



231-86250

DODGE CASTER / PINION ANGLE CAM

- Whether the truck is lifted or stock ride height, optimize caster and pinion angles for better tracking and axle/drive shaft position

ASCOT NO.	MFG. NO.	DESCRIPTION
222-82395	82395	Dodge Caster / Pinion Angle Cam

222-82395



GM TRUCK CAMBER/CASTER ADJ

- This kit replace the GM OE upper control arm bolt and cams for camber and caster adjustment. The 86375 kit (2) covers GM 1/2, 3/4, and 1 ton truck applications. Fast, simple installation! SPC uses a hex chromate free finish and offers a 700hr salt spray test for the best corrosion protection available. Use part number 86325 HD GM alignment pins to replace the often abused or missing OE pins

ASCOT NO.	MFG. NO.	DESCRIPTION
222-86375	86375	GM Truck Camber/Caster Adj

222-86375



NISSAN CAM BOLT KIT

- FRONT ADJUSTMENT RANGE: Camber/Caster ± 2.00 degree • 1 kit per wheel required

ASCOT NO.	MFG. NO.	DESCRIPTION
222-87520	87520	Nissan Cam Bolt Kit

222-87520



TOYOTA BOLT KIT

- FRONT ADJUSTMENT RANGE: Camber/Caster ± 1.50 degree • 1 kit per wheel required

ASCOT NO.	MFG. NO.	APPLICATIONS
222-25430	25430	TOYOTA 4WD: 1995-04 Tacoma; TOYOTA RWD: 1998-04 Tacoma PreRunner; TOYOTA 4WD&RWD: 1996-02 4-Runner
222-25435	25435	LEXUS AWD: 2003-09 GX; TOYOTA RWD: 2005 & up Tacoma PreRunner; TOYOTA 4WD: 2005 & Up Tacoma; TOYOTA 4WD&RWD: 2007-09 FJ Cruiser, 2003-09 4Runner
222-25440	25440	LEXUS AWD: 2010 & Up GX; TOYOTA 4WD&RWD: 2010 & Up FJ Cruiser, 2010 & Up 4Runner
222-25445	25445	TOYOTA: 01-07 Sequoia, 99-06 Tundra

Toyota Bolt Kit





HONDA CIVIC ADJUSTABLE CONTROL ARM

- The arm is built with SPC's xAxis™ sealed flex joint to reduce compliance
- Its' unique adjustment design permits on car adjustment of $\pm 3^\circ$ camber
- REAR ADJUSTMENT RANGE: Camber $\pm 3.0^\circ$ • REQUIRED: 1 per wheel

ASCOT NO.	MFG. NO.	DESCRIPTION
222-67475	67475	Honda Civic Adjustable Control Arm



HONDA/ACURA EZ ARM XR™

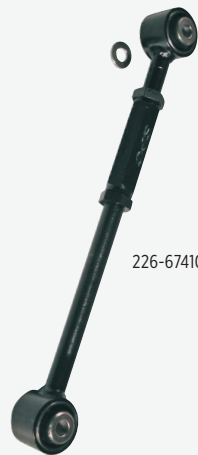
ASCOT NO.	MFG. NO.	ADJUSTMENT RANGE	APPLICATIONS
226-67030	67030	-2.00° To +3.40°	ACURA: Integra; HONDA: Civic, Del Sol, CRV, CRX
226-67230	67230	-4.00° To +6.00°	2001 and up Civic



HYUNDAI/KIA REAR EZ ARM XR™

- Provide up to $\pm 2^\circ$ camber and toe change • REAR ADJUSTMENT RANGE: Camber and Toe $\pm 2.00^\circ$ • 1 per wheel required

ASCOT NO.	MFG. NO.	DESCRIPTION	APPLICATIONS
226-67410	67410	Hyundai/Kia Rear EZ Arm XR™	HYUNDAI: 2007 & Up Elantra; KIA: 2007 & Up Optima, 2007 & Up Rondo



HONDA EZ ARM XR™

- Adjustment range: -2.00° to +4.00° • NOTE: An O.E. style ball joint is integrated in this arm

ASCOT NO.	MFG. NO.	DESCRIPTION	APPLICATIONS
226-67090	67090	Honda/Acura EZ Arm XR™	HONDA: 1998-2002 Accord; ACURA: 2001 3.2CL, 1999-2002 3.2TL 1996 & Up 3.5RL
226-67290	67290	Honda EZ Arm XR™	ACURA: 2001-06 MDX, 2004-08 TSX; HONDA: 2003-07 Accord, 1999-04 Odyssey, 2003-08 Pilot



ADJUSTABLE UPPER CONTROL ARM

- Camber adjustment from -1° to + 4° • 1 control arm per wheel

ASCOT NO.	MFG. NO.	DESCRIPTION	APPLICATIONS
236-00100	CA100	Adjustable Upper Control Arm	HONDA: 1996-2000 Civic, 1997-2000 CRV

236-00100

ALIGNMENT

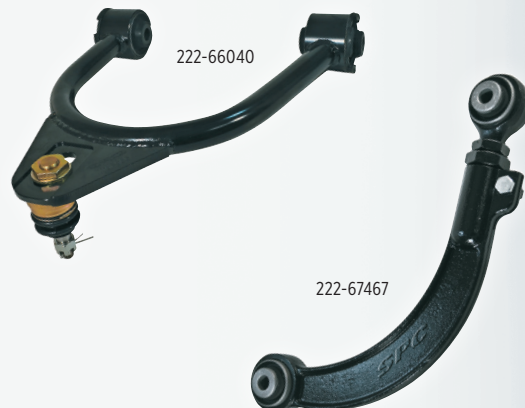


Camber/Casters Tools (cont.)

CHRYSLER/DODGE FRONT CONTROL ARM

- Arms fit both the right and left side • Camber adjustment ± 2.0 degrees
- Caster adjustment ± 1.5 degrees • 1 per wheel required

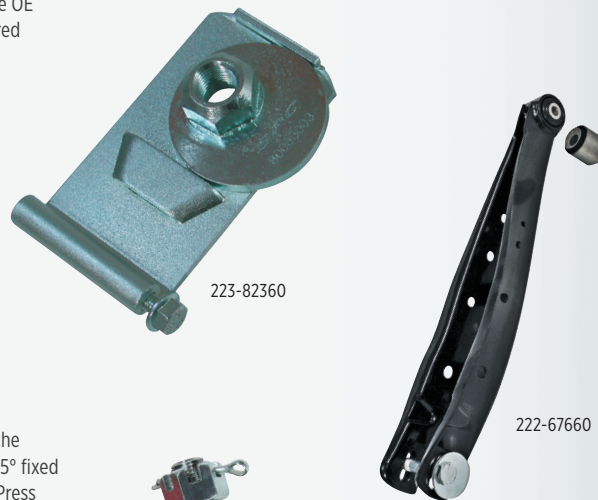
ASCOT NO.	MFG. NO.	APPLICATIONS
222-66040	66040	CHRYSLER: 2005-2008 300 RWD; DODGE: 2006 - 2008 Challenger, 2006 - 2008 Charger RWD, 2005 - 2008 Magnum RWD
222-66045	66045	CHRYSLER: 2009 & Up 300; DODGE: 2009 & Up Challenger, 2009 & Up Charger RWD
222-66047	66047	CHRYSLER: 2005 & Up 300 RWD; DODGE: 2006 & Up Charger AWD, 2005 - 2008 Magnum AWD



HONDA CIVIC REAR ADJUSTABLE CONTROL ARM

- SPC's unique adjustment design permits on car adjustment of $\pm 3.0^\circ$ camber and is adjustable for life • SPC's forged steel design adds adjustment to the arm without a weight penalty vs. the OE arm it will replace • REAR ADJUSTMENT RANGE: Camber ± 3.0 degrees • 1 per wheel required

ASCOT NO.	MFG. NO.	APPLICATIONS
222-67467	67467	2016 & Up Honda Civic (Incl. Si/Hybrid)



LOWER CONTROL ARM CAMBER KIT

- Even with the suspension loaded, this kits makes changes of up to ± 1.5 degree camber/caster fast and easy

ASCOT NO.	MFG. NO.	DESCRIPTION
223-82360	82360	Lower Control Arm Camber Kit

REAR ADJUSTABLE LOWER CONTROL ARM

- This hi-strength adjustable lower rear camber arm provides ± 2.0 degrees of change for the popular BRZ, FR-S, WRX and Impreza • REAR ADJUSTMENT RANGE: Camber $\pm 2.0^\circ$, Toe 1.5° fixed
- 1 per wheel required • RECOMMENDED TOOLS: 67647 Bushing Sleeves, 72509 Ball Joint Press

ASCOT NO.	MFG. NO.	DESCRIPTION
222-67660	67660	Rear Adjustable Lower Control Arm

ADJUSTABLE BALL JOINT

- Adjustable upper ball joints make front camber/caster adjustments easy on late model Honda and Acura • ADJUSTMENT: -1.50° to $+1.50^\circ$

ASCOT NO.	MFG. NO.	DESCRIPTION	APPLICATIONS
226-67125	67125	Honda/Acura Adjustable Ball Joint	ACURA: 1996 - 97 2.2CL, 1998 - 99 2.3CL, 1996 - 99 3.0CL, 2001-04 3.2CL, 1999 -2004 TSX; 1996-98 2.5 TL; 3.2 TL; HONDA: 1998 - 02 Accord, 1989 - 91 Civic & CRX, 1995 - 98 Odyssey
226-67165	67165	Honda/Acura Adjustable Ball Joint	ACURA: 1995 - 98 2.5TL, 1992 - 94 Vigor (front); HONDA: 1992 - 02 Prelude (Rear) 1992 - 1996 Prelude (Front)



PERFORMANCE BALL JOINT PRESS SET

- Can remove the ball joint from the front upper control arm without removing the arm from the vehicle

ASCOT NO.	MFG. NO.	DESCRIPTION
227-40920	40920	Performance Ball Joint Set





FULL CONTACT DUAL ANGLE EZ SHIMS™

- Full contact/dual angle • Corrects toe and camber with one shim • Total of three shims cover most shimable FWD vehicles

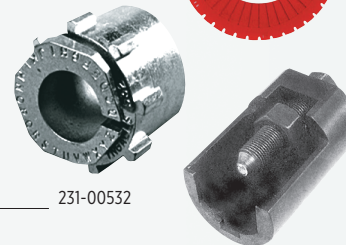
ASCOT NO.	MFG. NO.	DESCRIPTION	APPLICATIONS
221-75200	75200	Blue	Audi, Chevrolet/Geo, Chrysler, Dodge, Eagle, Isuzu, Plymouth, Volkswagen
221-75400	75400	Grey	Acura, Audi, Buick, Chevrolet, Chrysler, Dodge, Ford, Honda, Mercury, Nissan, Oldsmobile, Plymouth, Pontiac
221-75600	75600	Yellow	Buick, Cadillac, Chevrolet, Chrysler, Geo, Olds, Pontiac, Scion, Toyota, VW
221-75800	75800	Red	Buick, Cadillac, Chevrolet, Geo, Lexus SP, Oldsmobile, Pontiac, Toyota



FORD/DODGE TRUCK ADJUSTABLE CAMBER/CASTER BUSHING

- Camber and caster adjustment up to +/- 2-3/4° • 1 bushing per wheel

ASCOT NO.	MFG. NO.	DESCRIPTION	APPLICATIONS
231-00532	532	Ford/Dodge Truck Adjustable Camber/Caster Bushing	FORD: 1980-1985 4WD F150 and Bronco, 1980-2000 4WD F250 and F350; DODGE: 1994-1999 2WD/4WD 2500 Trucks, 1994-1999 4WD 3500 Trucks
231-00535	535	Ford Downsize Truck Adjustable Camber/Caster Bushing	FORD: 1983-1990 4WD Downsize Trucks



231-00532

247-77880

WHEEL SPREADER BAR

- Take the play out of front wheels during alignment! Place this spring-loaded pressure bar between the tires to assure a more accurate alignment. A must for Mercedes vehicles.

ASCOT NO.	MFG. NO.	DESCRIPTION
247-99918	99918	Wheel Spreader Bar



247-37975

STEERING KNUCKLE SPREADER

- Use this tool to expand steering knuckles safely and easily • This tool is perfect for single bolt strut vehicles • Pry bars can damage the knuckle, but this tool allows safe expansion with the tool adjustment nut • Designed to operate within a 4.4 - 10mm range, this expansion tool will fit most makes and models

ASCOT NO.	MFG. NO.	DESCRIPTION
247-37975	37975	Steering Knuckle Spreader



223-91000

FORD COMBINATION SLEEVE PULLER

- Pulls both O.E. and most aftermarket camber/caster sleeves quickly and efficiently without damaging the ears of the sleeve • Heat treated high strength steel • Single-unit design with no loose parts

ASCOT NO.	MFG. NO.	DESCRIPTION	APPLICATIONS
247-77880	77880	Ford Combination Sleeve Puller	FORD: Twin I-Beam w/ Upper And Lower Ball Joints

FASTRAX™ COMPLETE ADJUSTABLE CAMBER/CASTER GAUGE

- Portable, hands-free alignment can be done quickly and easily with the FasTrax™ Adjustable Camber/Caster Gauge stock or Specialty Product's sliding ball joints

ASCOT NO.	MFG. NO.	WHEEL SIZE
223-91000	91000	13" - 18"

FASTRAX™ CAMBER/CASTER GAUGE

- Add quick alignment checks to your fleet PMs • Save tire wear & fuel costs

ASCOT NO.	MFG. NO.	WHEEL SIZE
223-91040	91040	21" - 26"



223-91040



Heavy Duty Alignment

TRUCK AXLE SHIMS (HEAVY DUTY ZINC ALLOY)

- Available in 1/2° changes up to a 4° caster change, either positive or negative • Packaged six per box • Any solid axle 2 or 4 wheel drive vehicle

ASCOT NO.	MFG. NO.	WIDTH	DEGREE TAPER
243-00891	89199	3"-3-1/2"-4"	1/2°
243-00892	89299	3"-3-1/2"-4"	1°
243-00893	89399	3"-3-1/2"-4"	1-1/2°
243-00894	89499	3"-3-1/2"-4"	2°
243-00895	89599	3"-3-1/2"-4"	2-1/2°
243-00896	89699	3"-3-1/2"-4"	3°
243-00897	89799	3"-3-1/2"-4"	3-1/2°
243-00898	89899	3"-3-1/2"-4"	4°



243-00891

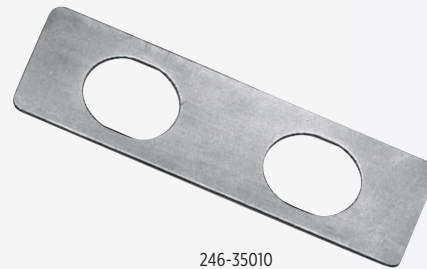


243-00841

TRUCK AXLE SHIMS (HEAVY DUTY ZINC ALLOY)

- One part number gives you six shims in a box

ASCOT NO.	MFG. NO.	WIDTH	DEGREE TAPER	BOX WT.
243-00841	84199	2-1/4"- 2-1/2"	1/2°	1-1/2 Lbs.
243-00842	84299	2-1/4"- 2-1/2"	1°	1-1/2 Lbs.
243-00843	84399	2-1/4"- 2-1/2"	1-1/2°	2 Lbs.
243-00844	84499	2-1/4"- 2-1/2"	2°	2-1/4 Lbs.
243-00845	84599	2-1/4"- 2-1/2"	2-1/2°	2-3/4 Lbs.
243-00846	84699	2-1/4"- 2-1/2"	3°	2-3/4 Lbs.
243-00847	84799	2-1/4"- 2-1/2"	3-1/2°	3-1/4 Lbs.
243-00848	84899	2-1/4"- 2-1/2"	4°	3-1/4 Lbs.



246-35010

PETERBILT AIR LEAF ADJUSTING SHIM

ASCOT NO.	MFG. NO.	SIZE	QTY.
246-35010	35010	1/32"	6
246-35011	35011	1/16"	6
246-35012	35012	1/8"	6

FREIGHTLINER ADJUSTING SHIMS

ASCOT NO.	MFG. NO.	SIZE	QTY.
246-35020	35020	1/32"	6
246-35021	35021	1/16"	6
246-35022	35022	1/8"	6



246-35020

KENWORTH AIR GLIDE SPACER FOR EIGHT BAGGERS

ASCOT NO.	MFG. NO.	THICKNESS	QTY.
241-35001	35001	1/32"	6
241-35002	35002	1/16"	6
241-35003	35003	1/8"	6
241-35004	35004	1/4"	6
241-35005	35005	1/2"	6
241-35006	35006	3/4"	6
241-35007	35007	1"	6

241-35001
1/32" Spacer



VOLVO/WHITE TANDEM SHIMS

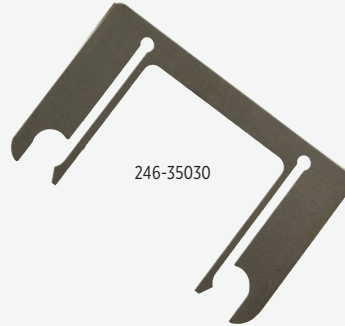
ASCOT NO.	MFG. NO.	SIZE	QTY.
246-35030	35030	1/32"	6
246-35031	35031	1/16"	6
246-35032	35032	1/8"	6



246-35040

I.H.C. TORQUE ARM SHIMS

ASCOT NO.	MFG. NO.	SIZE	QTY.
246-35040	35040	1/32"	6
246-35041	35041	1/16"	6
246-35042	35042	1/8"	6



246-35030



246-35070

SINGLE SLOT TANDEM TRUCK SHIMS

ASCOT NO.	MFG. NO.	SIZE	QTY.
246-35060	35060	1/32"	6
246-35061	35061	1/16"	6
246-35062	35062	1/8"	6



246-35060



247-91860

FREIGHTLINER SHIMS FOR AIR GLIDE SUSPENSION

ASCOT NO.	MFG. NO.	SIZE	QTY.
246-35070	35070	1/32"	6
246-35071	35071	1/16"	6
246-35072	35072	1/8"	6

PETERBILT/KENWORTH FLEX AIR SUSPENSION SHIMS

• Adjust thrust angle and toe by shimming the torque arms

ASCOT NO.	MFG. NO.	SIZE	QTY.
246-36010	36010	1/32"	6
246-36011	36011	1/16"	6
246-36012	36012	1/8"	6



246-36010

S-CAM BUSHING EXTRACTOR

ASCOT NO.	MFG. NO.	DESCRIPTION
247-91860	91860	S-Cam Bushing Extractor

TANDEM ALIGNMENT SET

• These alignment angle shims are now available in a heavy duty metal box to help you organize all of your shims • Packaged with a large variety of shims and an organization chart inside the lid to make reordering and organization of shims quick and easy

ASCOT NO.	MFG. NO.	DESCRIPTION
246-36000	36000	Tandem Alignment Set



246-36000

ALIGNMENT

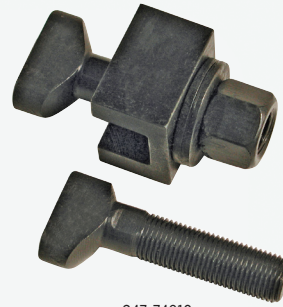


Heavy Duty Alignment (cont.)

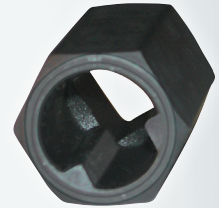
GM UPPER CONTROL ARM PUNCH

- For removing the alignment inserts on the upper control arm alignment brackets without damaging the alignment bracket • Lubricate before use • Not for use with impact wrenches (air tools)

ASCOT NO.	MFG. NO.	DESCRIPTION	APPLICATIONS
247-74910	74910	GM Upper Control Arm Punch	CHEVROLET/GM: 1989 - 1998 2WD/4WD C & K Series 1/2, 3/4 & 1 Ton Trucks, 1991 & Up AWD Astro Vans & AWD Safari Vans



247-74910



236-45938

CANYON/COLORADO SOCKET

- This special grooved socket fits over the end of the bolt allowing the technician to turn the alignment cams to change alignment angles after loosening the lock nut

ASCOT NO.	MFG. NO.	DESCRIPTION
236-45938	45938	Canyon/Colorado Socket

236-77350



FORD SUPER DUTY TIE ROD SLEEVE ADJUSTER

- Extra long bar gives you maximum leverage to loosen rusted sleeves without injuring your knuckles • 8-position tool allows 360° rotation without removing the adjuster block from the sleeve

ASCOT NO.	MFG. NO.	DESCRIPTION
236-77350	77350	Ford Super Duty Tie Rod Sleeve Adjuster

228-61400

AIR BLADDER CAMBER ADJUSTING TOOL

- Simply loosen the strut mount bolts, place the adjuster between the tire and strut, and inflate • To adjust camber slowly release the air until the wheel retracts to the specified alignment setting, tighten bolts and the alignment is done • INCLUDES: A specially designed, puncture resistant air bladder, 2' air hose, a low pressure pop-off valve to prevent overinflating and an air control valve for inflating and controlled deflating

ASCOT NO.	MFG. NO.	DESCRIPTION
228-61400	DOWTC614	Air Bladder Camber Adjusting Tool



247-08130

H/D STEEL WHEEL RIM STRAIGHTENING TOOL

- For quick and easy removal of indentations on wheel flanges and rims of most vehicles

ASCOT NO.	MFG. NO.	DESCRIPTION
247-08130	81309	H/D Steel Wheel Rim Straightening Tool



227-89000

INNER TIE ROD END WRENCH SET

- **CONTAINS:** 89105, 89106, 89107, 89108 • **CAUTION:** Not for use with impact wrenches (Air tools)

ASCOT NO.	MFG. NO.	DESCRIPTION
227-89000	89000	Inner Tie Rod End Wrench Set

Automotive Alignment Equipment

DWA1100 WHEEL ALIGNMENT SYSTEM

The comprehensive system offers eight wireless and robust camera CCD sensors with lightweight wheel clamps to support a four-wheel alignment system. The design is state-of-the-art electronics with efficient software to align the vehicle without any excessive key-closures. Efficiency coupled with a flexible alignment path reduces time spent on vehicle.

DWA3500 3D HIGH DEFINITION WHEEL ALIGNMENT SYSTEM

DWA3500 is the new 3D wheel alignment system for cars and light commercial vehicles, with a completely redesigned cabinet with drawers and housings for printer and accessories, an easy accessibility for maintenance and an advanced software. The 3D camera support beam is motorized and fully automated. Camera beam height is automatically adjusted to the height of lift. The software system, entirely developed by CEMB, guides the user through all the alignment operations with clear and user-friendly graphics.



203-11003

205-35000

ASCOT NO.	MFG. NO.	DESCRIPTION
203-11003	DWA1100	DWA1100 Wheel Alignment System

ASCOT NO.	MFG. NO.	DESCRIPTION
203-35000	DWA3500	DWA3500 Wheel Alignment System with Automatic Camera Beam

ALIGNMENT

Automotive Alignment Equipment (cont.)



BRANICK STRUT SPRING COMPRESSOR

- The 7600 handles the heaviest coil-over-shocks, on light trucks and SUV's, without needing additional adapters • Longer handles for extra torque
- The multi-positions upper spring hooks can be arranged for ultimate flexibility to fit "factory" coil spring configurations • It has a longer compression stroke and an integrated structural ring guard
- Whether long, short, narrow, or angled, the 7600 will get it done
- MADE IN THE U.S.A.



ASCOT NO.	MFG. NO.	DESCRIPTION
228-07600	7600	Strut Spring Compressor
228-00761	761	Bench Mount for Strut Spring Compressor
228-00764	764	Mobile Cart for Strut Spring Compressor

6500 3D ALIGNER

- Align vehicles quickly & easily - designed interface to be straight forward and tech friendly whether your an industry veteran or brand new • Flexibility for your shop's needs - No matter what vehicle in your shop you're trying to roll, we have a roll option to make it quick and easy
- Powerful software features - We packed our 6500 with features and powerful software like our Toe Plus tool and All Measurement Screen • Tire Gripping wheel clamps - Our dynamic clamps can extend to up to 43" • They easily install with no metal to metal contact



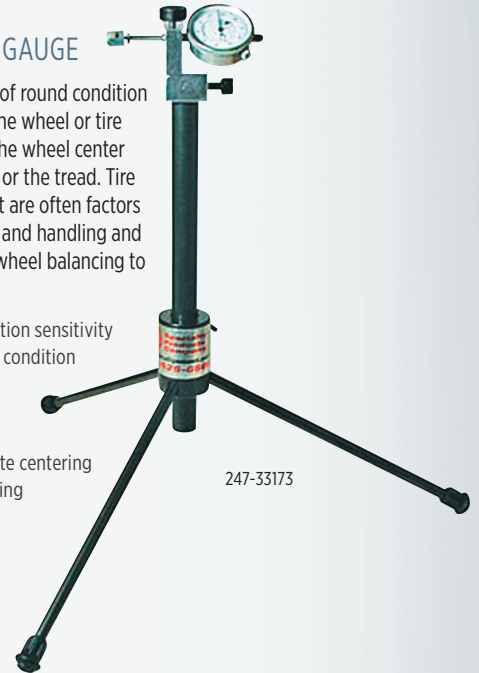
ASCOT NO.	MFG. NO.	DESCRIPTION
443-06500	6500	3D Aligner



RADIAL RUNOUT GAUGE

Radial runout is an out of round condition in which the radius of the wheel or tire is not consistent from the wheel center to any point on the rim or the tread. Tire and wheel radial runout are often factors in troubleshooting ride and handling and in maintaining correct wheel balancing to reduce vibration.

- Measures vehicle vibration sensitivity
- Measures out of round condition
- EASY TO USE: only 2 adjustments
- Pinpoints high or low spots in the tire
- Determines accurate centering of tire and wheel mounting



ASCOT NO.	MFG. NO.	DESCRIPTION
247-33173	64250	Radial Runout Gauge

ALIGNMENT CHECK

- Uses laser technology to dynamically measure the alignment of the wheels as the car enters the service area • Instantly checks alignment and creates a detailed inspection report



ASCOT NO.	MFG. NO.	DESCRIPTION
443-52000	CTC 5200000	Alignment Check



CH-5



CH-13



CH-10



BS-7



VIPER BEAD SEATER



AVAILABLE IN
18 LITER
13 LITER
11.5 LITER

TIRE SERVICE INTERNATIONAL



TI-95 TIRE INSPECTOR



1200R TIRE TRUER

AUTEL MAXI TPMS

COMPLETE TPMS SOLUTIONS ADVANCED TIRE SERVICE

TBE200 | TS900 | TS508WF | ITS600 | 1-SENSOR | BLUETOOTH TPMS SENSOR



Autel offers a Complete TPMS Solution providing both TPMS service tools and sensors. TPMS software updates are **FREE** for the life of the tool.*

Applicable only for the ITS600 and TS508WF

SCAN HERE FOR
PRODUCT DETAILS



AUTEL ACADEMY TECHNICAL TRAINING

Visit autel.com/us/academy and register today for hands on automotive diagnostic, repair, service, and ADAS instruction.

AUTEL®